

AVer PTZ310N/330N and TR311HN/TR3xxNV2 Camera

Integration with Panopto and NDI

(February 2022)

Steps to integrate the AVer PTZ and New TR Cameras with Panopto and NDI protocol

AVer Pro-AV has high quality image Cameras (PTZ310N/PTZ330N and TR311HN/TR3xxNV2) that will integrate with Panopto workflows for peak performance and ease of use. We will show the configuration process for both these camera lines and Panopto software.

Panopto has an easy-to-use online video platform solution for video management, recording, live streaming, video search, quizzing, analytics, and more. Panopto supports the NDI/HX standard via the NewTek NDI Virtual Input driver, which can be downloaded from NewTek's website:

<https://www.newtek.com/ndi/tools/>

NDI is a high-performance standard that allows anyone to use real time, ultra-low latency video on existing IP video networks. There are only certain AVer cameras that will support NDI video protocol, those with the "N", designates that the camera can integrate with the NewTek NDI protocol. You can go to <https://www.ndi.tv/> to learn more about NDI or download the NDI Virtual Input application if needed.

Prerequisites:

- Chrome Browser, version 79.0.3945.xxx and later.
- Panopto user account.
- NDI Tools 4.1/5.x
- Windows 10 Pro OS, i7 Processor, 16GB Memory, used in this setup.

NDI Minimum System Hardware Requirements:

- 64-bit Microsoft® Windows 7 operating system (OS) or better recommended
- Intel i3 or i5 Sandy Bridge CPU (Quad/Six core) or better with integrated GPU (NVIDIA discrete GPU, with 2GB video memory or better recommended)
- 8GB RAM
- Gigabit connection or better
- Display with screen resolution of 1024 x 768 or higher *Mac OS X versions of select tools also available.

*Minimum system requirements and features may vary. *Subject to change without notice.

Overview of NDI use with PTZ-N and New TR311HN/TR3xxNV2 cameras

NDI offers several options to broadcast, connect, stream, view, video over 1Gbit/s IP networks.

We will discuss the 4 main functions from NDI Tools for use with AVer cameras, we will not discuss each in detail, but only as needed to setup the PTZ and TR cameras, they are:

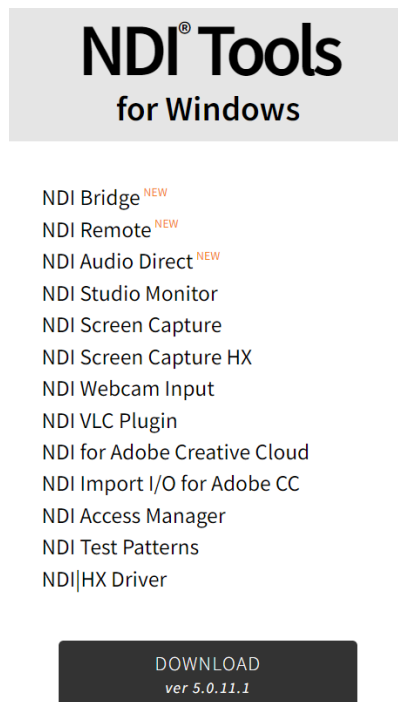
- NDI Studio Monitor
- NDI Virtual Input
- NDI Access Manager (Routing Control)
- NDI PTZ Camera control from Studio Monitor

NDI 5 Tools Installation

1. If NDI 5 Tools software is not installed, go to <https://www.ndi.tv/> to download and install.
2. From the NDI website, select NDI->NDI Tools, and then scroll down to NDI Tools 5.x to download.



3. Next, select “NDI Tools for Windows” download.



NDI 5 Tools Installation (continued)

- You will be asked to register for the Download, Name, email, etc. then you should see the following to continue with the download.



- Once installed, you should have the following on your Windows Start Menu:



NDI Bandwidth

The following table is intended as a guide for calculating bandwidth needs based on video resolutions and frame rates. Each reference stream includes 16 channels of audio.

***Note:** Information provided by NewTek NDI Technical brief.

Example NDI video stream	Approximate bandwidth required
1 x UHDp60 video stream	250 Mbps
1 x UHDp30 video stream	200 Mbps
1 x 1080p60 video stream	125 Mbps
1 x 1080i60 video stream	100 Mbps
1 x 720p60 video stream	90 Mbps
1 x SD video stream	20 Mbps

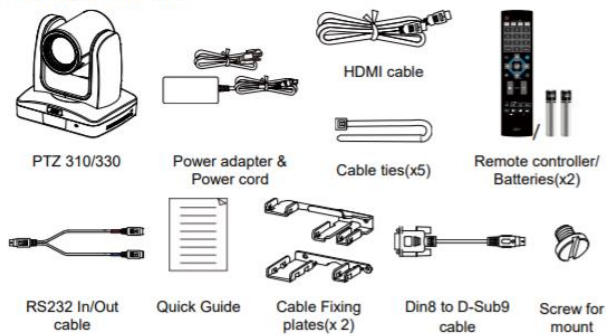
Table 1. Bandwidth Requirements. The approximate bandwidth required per NDI video stream for common video resolutions and frame rates.

AVer PTZ310N/PTZ330N NDI Camera Overview

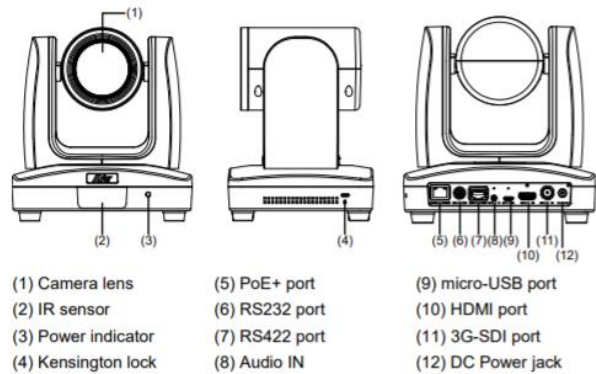
The AVer PTZ330N NDI PTZ Live Streaming Camera is the latest camera with NewTek NDI® integrated. It combines both standard SDI and HDMI connections as well as Ethernet/NDI network connectivity for HD video streaming, recording, and broadcasting. The PTZ330N can output HD video and audio while receiving control signal and power over a single connection.



Package Contents



Overview



AVer PTZ310N/PTZ330N Camera NDI Video Mode

Before proceeding, we need to verify that the PTZ310N/330N camera is setup for NDI, if not; there will be no NDI output.

There are (2) ways to do this:

- HDMI Output of the camera
- WebUI of the camera

HDMI

1. Connect the HDMI output of the camera to a monitor and use the camera remote to enable the OSD (On Screen display), then navigate to the System→NDI→ setting and verify it is set to ON.

***Note:** The cameras from the factory come with NDI enabled, but this may change in future production models.



2. If it is set to OFF, select ON, the camera will need to reboot.

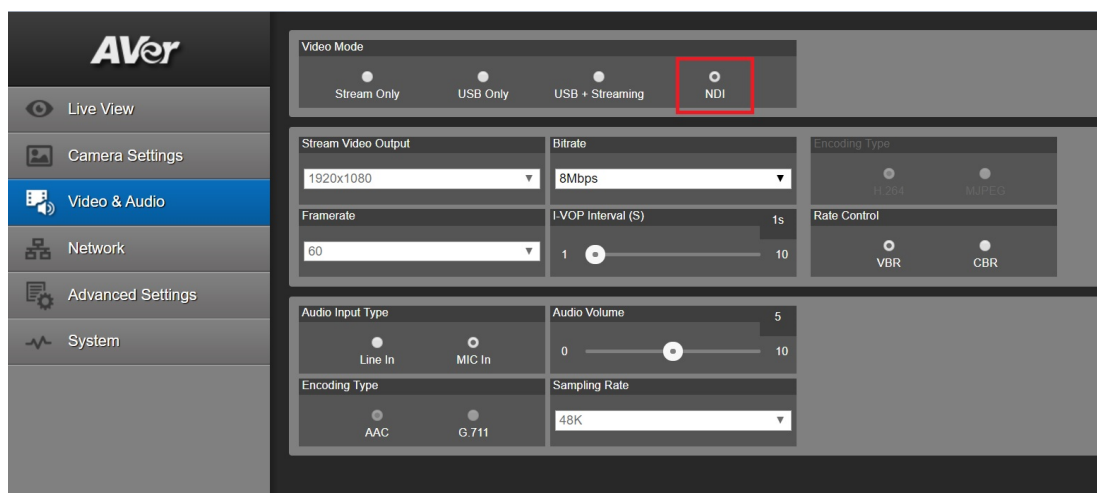
***Note:** When the camera is in NDI mode, the USB video output is disabled.

AVer PTZ310N/PTZ330N Camera NDI Video Mode (continued)

WebUI

1. The **Default IP** address is 192.168.1.168. You can change this using the HDMI output OSD, selecting the Network setting.
2. Use a Chrome Browser to access the WebUI of the camera.
3. The **Default** Username/Password is: admin / admin
4. The login credentials will need to be changed, carefully write down the NEW credentials.
5. Login to the WebUI of the camera with the NEW credentials.
6. Once logged in, go to the “Video & Audio” settings, verify that “Video Mode” has the “NDI” radio button selected.

***Note:** The camera will need to re-boot when changing to/from NDI video mode.

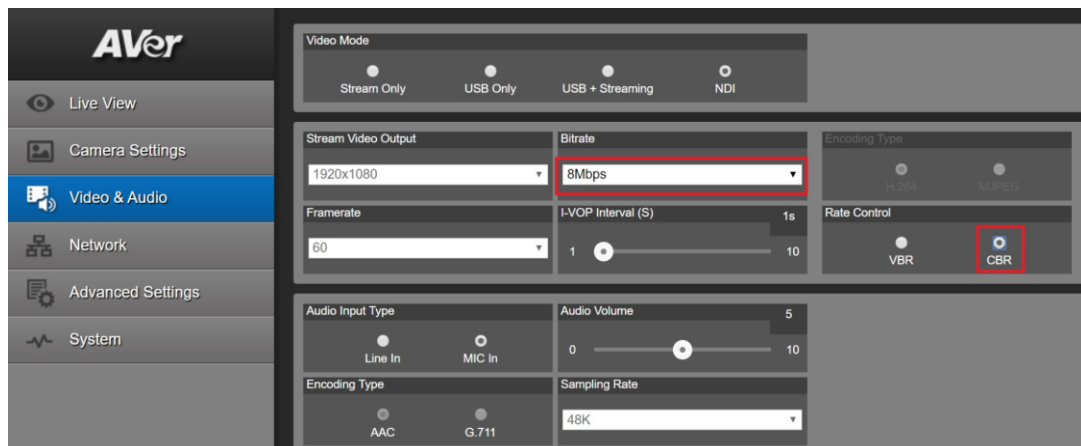


***Note:** The STREAM Video Output, Framerate, encoding type, and Sampling Rate settings are only for viewing, they are not adjustable in NDI mode. The NDI native video resolution is 1920x1080p /60.

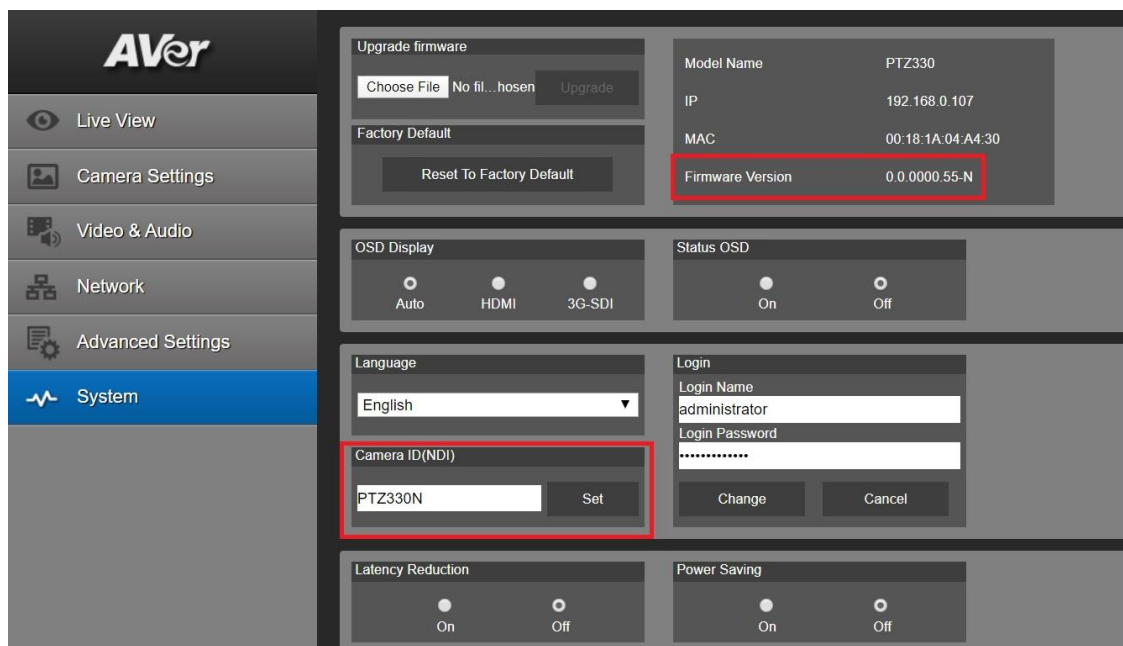
Video Standard -->	Stream Only (Various)	USB Only (Various)	USB + Streaming (Various)	NDI (1080p/60)
SDI Output	✓	✓	✓	✓
HDMI Output	✓	✓	✓	✓
USB Output	✗	✓	✓	✗
RTSP Output	✓	✗	✓	✓

AVer PTZ310N/PTZ330N Camera NDI Video Mode (continued)

- The Rate Control setting should be set to CBR, there have been better results seen using this option.



- Setting the Bitrate to 8Mbps is also recommended, but you may see different results on your network with other settings.
- In the *System* page you can set the identity name *Camera ID (NDI)* for display on the NDI interface. There is a limit of 10 characters for the name. After choosing your name press "Set" to make the change. ***Note:** A reboot of the camera is necessary for the name change. The firmware version can also be verified from the *System* page.



AVer PTZ310/PTZ330N Camera NDI Video Mode (continued)

10. The following characters can be used for the Camera ID description.

Numeric characters	0123456789
Alphabetical characters (upper and lower cases)	ABCDEFGHIJKLMNOPQRSTUVWXYZ abcdefghijklmnopqrstuvwxyz
Symbols	! @ # \$ % ^ & * () , . \ ; : " ' + = < > ? [] { } _ ` ~ \ /

WebUI

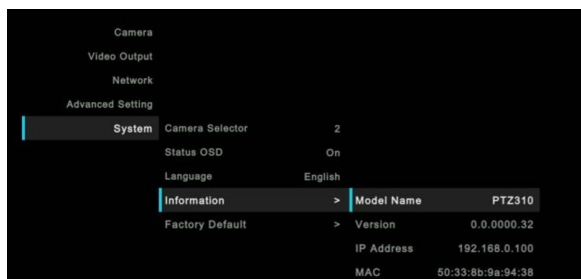
Networking:

1. Connect the PTZ330N camera via RJ45 Network Cat5E (or better) connection; verify IP address of Camera to connect via Web browser. If IP address is not known, locate the remote, select the “Menu” icon and navigate to the “**Network->DHCP->**” setting, verify DHCP is set to “On” to grab an available IP address. If you are reserving IP addresses, verify it is set to “OFF” and that the correct IP address has been set.

Go to **Network > DHCP > On**.

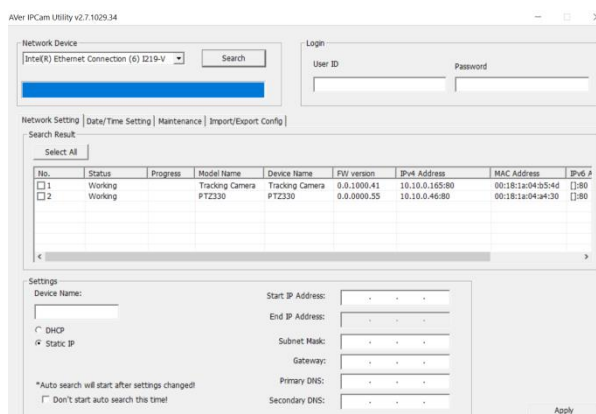


After turning DHCP on, go to **System > Information** to view the IP address.



2. Another way to find the Camera IP address (On same Subnet) is to use the *AVer IPCam Utility* to find the camera. AVer software can be found here:

<https://www.aver.com/download-center>. OR <https://www.averusa.com/pro-av/support/>

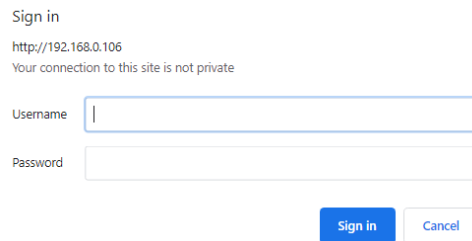


AVer PTZ310N/PTZ330N Camera NDI Video Mode (continued)

WebUI

Networking:

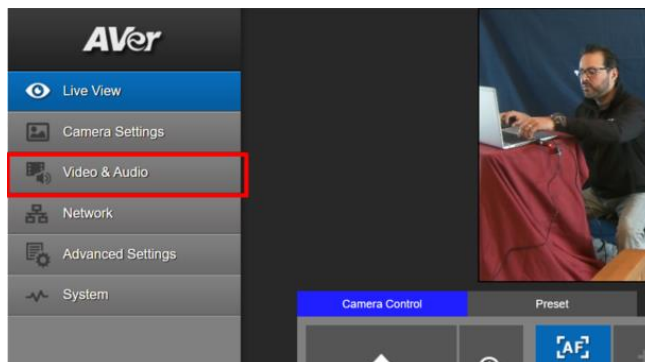
3. Once you have the IP address setup, type the IP address in your Chrome browser (Setup on same subnet) and you should now see the login to the PTZ330 camera shown below.



***Note:** The default login information is: admin / admin.

If this is the first time accessing the PTZ330 camera via the Web login it will ask you to change the Username/Password. **Please write down the NEW credentials.**

4. Next, you should now see the main login screen with a “Live View” of the PTZ Camera.



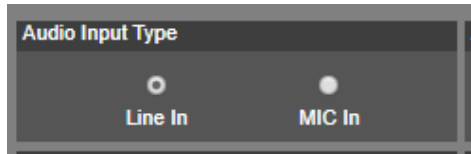
Next, after selecting the *Video & Audio* setting, verify that you have “NDI” selected for Video Mode. Select your Stream Video Output, Bitrate, Framerate, Encoding, etc.

***Note:** The camera will need to re-boot when changing to/from NDI video mode.

AVer PTZ Camera Audio Settings

Before connecting to the Microsoft Teams environment, verify that the Audio and Video can be recorded using the NDI *Studio Monitor* Tool.

1. Using the PTZ camera Audio (In) connection, set the Audio Input Type to *Line-In*.



MIC-In: Use a 3 to 4 MIC-In cable to connect the camera and MIC-In device (microphone).
50mVrms (max.); supplied voltage: 2.5V

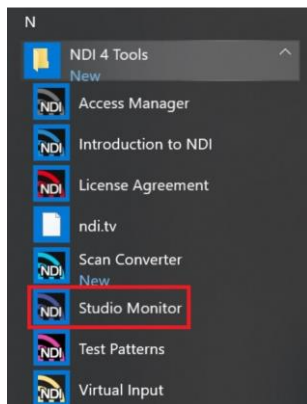
Line In: Line Input level is 1Vrms (max.)

2. Select the Audio Settings in the NDI Monitor tool to a level where audio is being captured; you may need to “tweak” the level to get a good level.
3. Next, we will discuss how to test that NDI audio/video is being received and recorded using *NDI Studio Monitor*.

NDI Studio Monitor

Using NDI Studio Monitor is a quick way to verify that the AVer PTZ camera is outputting NDI video and audio.

1. Go to Windows Start Menu, select NDI’s *Studio Monitor*.

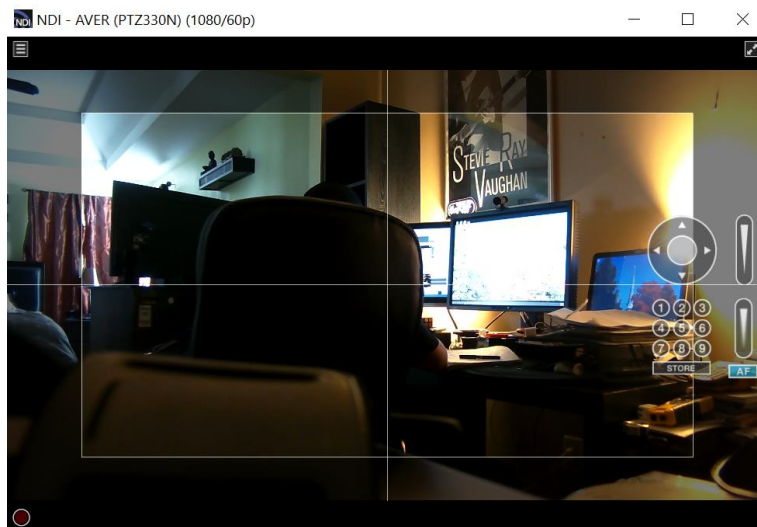


2. Next, the NDI Studio Monitor window will open, it may display AVer video or may display NDI’s default video of “None”.
3. Next, to view AVER video, select the Menu box displayed on upper left, then select “AVER PTZ330N”. You can also “right-click” anywhere within the window to access the menu.

NDI Studio Monitor (continued)



- Next, you should now be viewing the AVER PTZ330/310N video as a source and it should also be displaying the Video Standard (1080/60p) from AVer Camera.

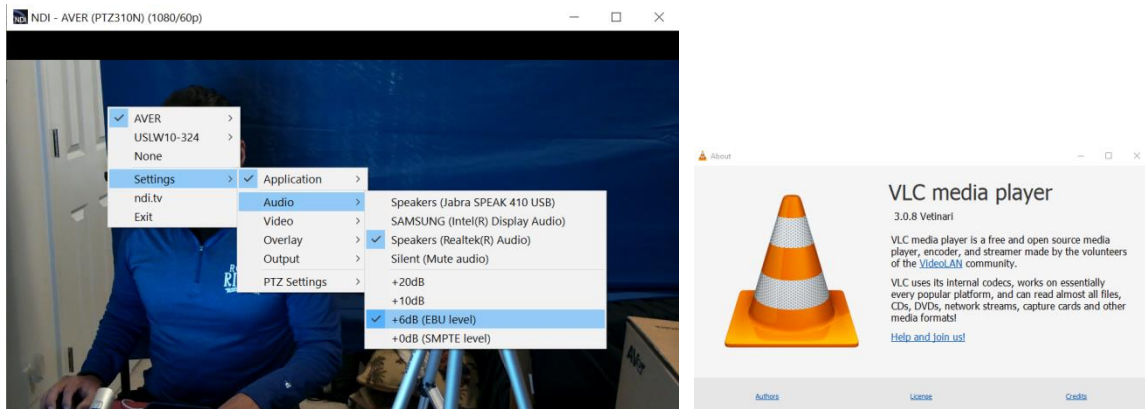


- At this point, you can close the window and have verified NDI video from PTZ camera is working.

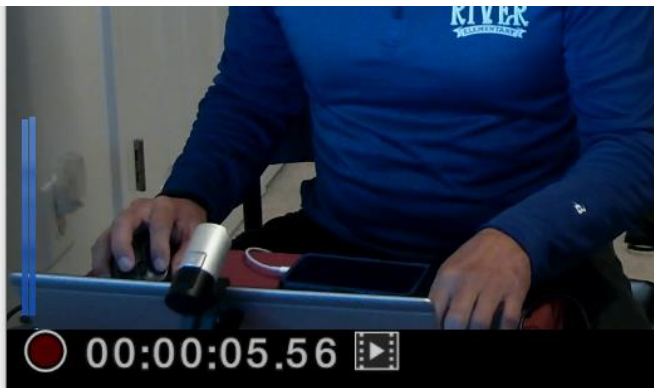
AVer PTZ Camera NDI Audio

Once we have verified that video is working properly, we need to verify that audio is also being captured.

1. In the example below we needed to adjust level to +6dB (EBU Level) to get audio recorded through the NDI Monitoring tool then played through VLC Media Player (3.0.8).




2. You should also see blue “Audio bars” in the lower left corner of the NDI display indicating an audio signal is being received.



3. Next, select the red “record” circle icon to begin recording.

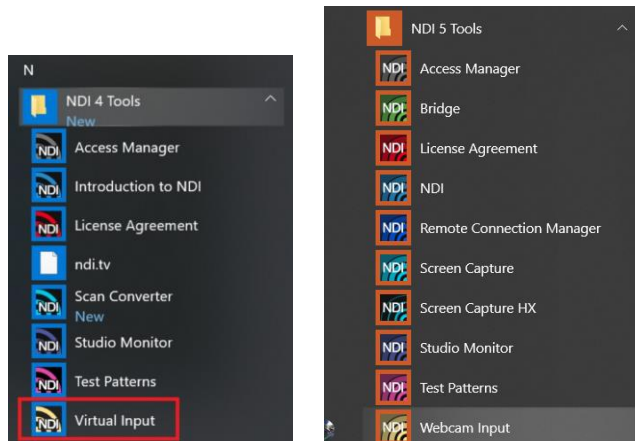


4. Next, select the red “record” circle icon again to end the recording.
5. Next, select the  “film” icon and will take you to the recording directly. The recorded video will be in the “C:\Users\Dave\Videos\” folder in Windows.
6. Use VLC or some other player that supports NDI.
7. This concludes the quick test to verify that Audio/Video is being recorded and played via NDI.

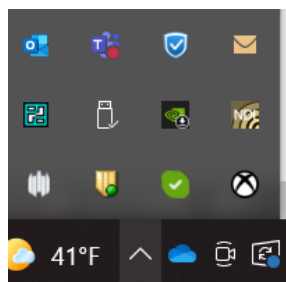
NDI Virtual Input / Webcam Input

Using the NDI Virtual Input, it gives you the ability of supplying a high-quality video source to Zoom or Hangouts meetings, (i.e., from PTZ330N), here is how to configure a “Webcam Input” from NDI. This “Webcam Input” will be the video *Source* for Zoom.

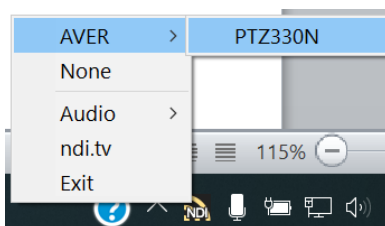
1. Go to Windows Start Menu, select NDI’s *Webcam Input* application.



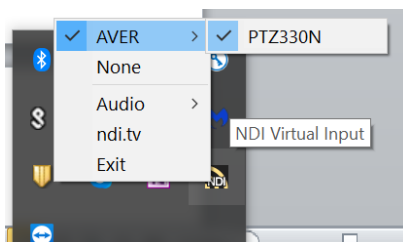
2. Next, it will open and place an icon on your System Tray.



3. Next, Right-Click on the NDI icon, you should have the ability to select AVER->PTZ330N.



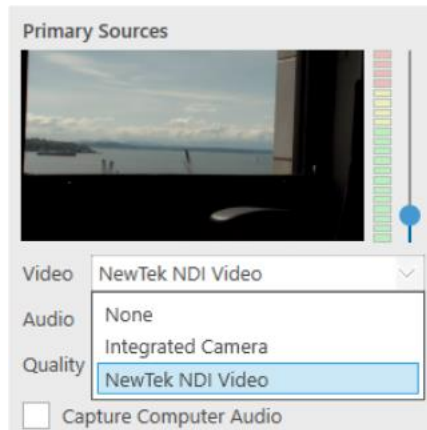
4. Next, verify that your selection is for AVER->PTZ330N, Right-click on icon to verify check marks are there.



5. This concludes setting up the AVer PTZ camera as a *Webcam Input* for NDI integration.

Panopto for Windows System Video Input (NDI)

1. Go to the Panopto's desktop client; select the NDI source from the list.

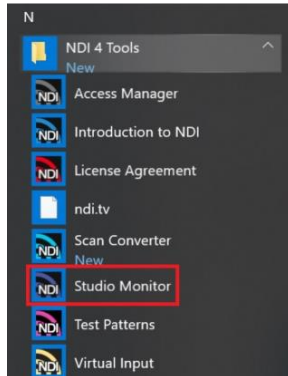


2. Next, you should be seeing the NDI video from the PTZ camera. If not, go to the NewTek NDI Studio Monitor to verify video from the camera.

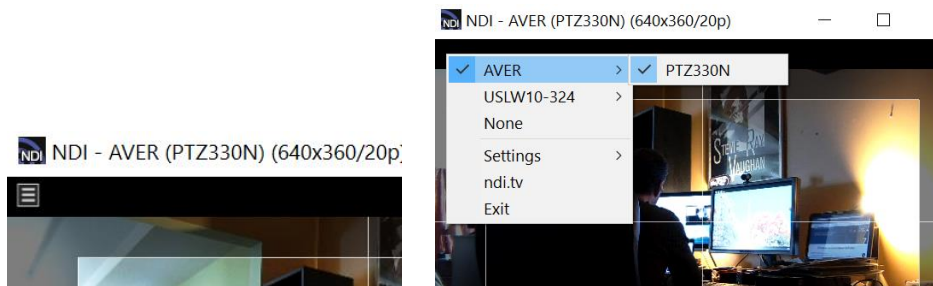
PTZ Camera Control from NDI Studio Monitor

The NDI Studio Monitor allows you to view or display any number of NDI video sources across the network, such as the AVer PTZ310/330N camera. There is also remote control of PTZ, recording, and configuration of an applicable source. We will discuss the NDI PTZ control of the AVer PTZ310N/PTZ330N camera.

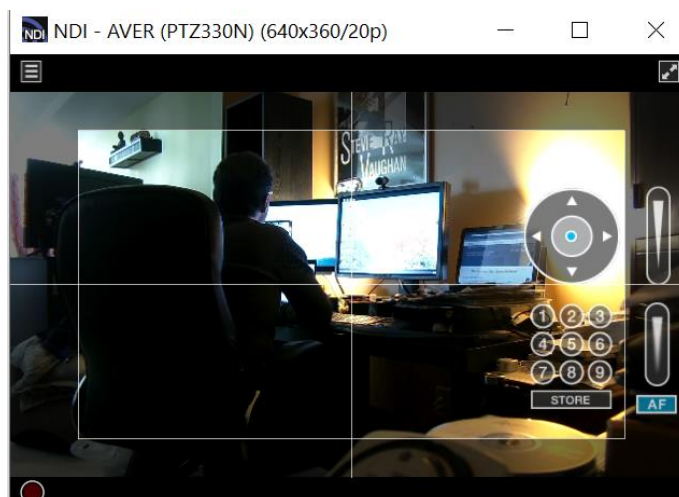
1. Go to Windows Start Menu, select NDI's *Studio Monitor*.



2. Next, the NDI Studio Monitor window will open, it may display AVer video or may display NDI's default video of "None". If "None" is displayed, select the Menu box (or right-click on display), then select *AVER->PTZ330N* as the source.



3. You should now be seeing the PTZ310/330 video, to activate the controls, move your mouse over the window.

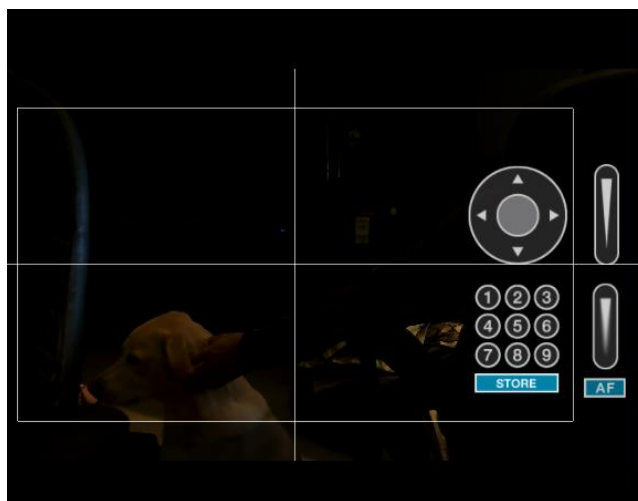


4. The NDI AVer camera controls are Pan, Tilt, Zoom, Manual Focus, Automatic Focus, and Position Presets.

PTZ Camera Control from NDI Studio Monitor (continued)



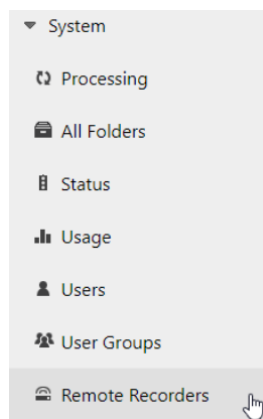
5. Initially there will *not* be a blue dot in any of the controls, move your mouse over to the Pan/Tilt control area, and then left click hold. You will now have a “Joystick” type control of the AVer camera.
6. Move your cursor over the Zoom control, left click hold, you can control the Zoom of the camera.
7. To create a “Preset”, adjust the camera to the preferred position, then select “Store” followed by one of the 9 presets.



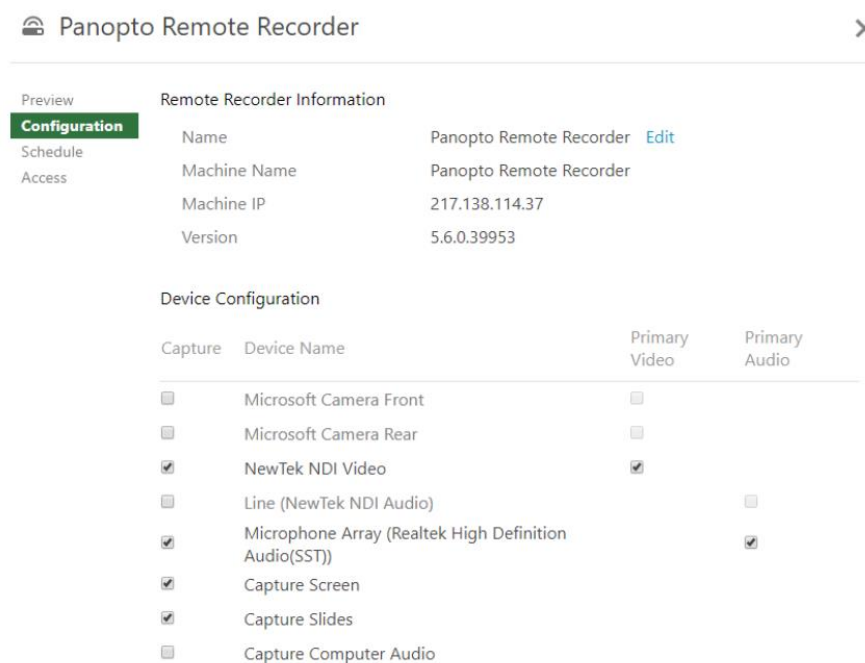
8. This concludes the AVer PTZ330 camera control section with NDI Studio Monitor.

Panopto Remote Recording

1. As an Administrator, from the Panopto VCMS select *System -> Remote Recorders*.



2. Next, select the remote recorder you have configured with the NDI virtual input, and choose the configuration.
3. Next, select the NewTek NDI Video source as a Primary or secondary source. You can also choose to select the Line (NewTek NDI Audio) source if you are using the input as an audio source as well.



4. You are now able to record into Panopto with your configured NDI source.

NDI Bandwidth

The following table is intended as a guide for calculating bandwidth needs based on video resolutions and frame rates. Each reference stream includes 16 channels of audio.

***Note:** Information provided by NewTek NDI Technical brief.

Example NDI video stream	Approximate bandwidth required
1 x UHDp60 video stream	250 Mbps
1 x UHDp30 video stream	200 Mbps
1 x 1080p60 video stream	125 Mbps
1 x 1080i60 video stream	100 Mbps
1 x 720p60 video stream	90 Mbps
1 x SD video stream	20 Mbps

Table 1. Bandwidth Requirements. The approximate bandwidth required per NDI video stream for common video resolutions and frame rates.

TR311HN and TR3xxNV2 Cameras

AVer Pro-AV first launched the NEW AI tracking cameras around April 2021 with the “H” chip, which were not TAA compliant. To fix this issue, AVer Pro-AV then came out with the NEW V2 cameras that would satisfy and be compliant with the TAA regulations. The AI Auto Tracking is the same, there are some differences though in the height of the camera and the USB output connection, but the process to integrate them within an NDI workflow is the same.



Camera	TR311HN	TR311	TR313 - 4K	TR331	TR313V2 - 4K	TR333V2 - 4K
Zoom	12X Optical, 12X digital	12X Optical, 12X digital	12X Optical, 12X digital	30X Optical, 12X digital	12X Optical, 12X digital	30X Optical, 12X digital
Max Resolution	1080@60fps	1080@60fps	2160@30fps	1080p@60fps	2160p@30fps	2160p@30fps
Outputs	IP / HDMI / USB	3G-SDI / IP / HDMI / USB	3G-SDI / IP / HDMI / USB	3G-SDI / IP / HDMI / USB	3G-SDI / IP / HDMI / USB	3G-SDI / IP / HDMI / USB
Streaming	RTMP / RTSP SRT / NDI	RTMP / RTSP / SRT	RTMP / RTSP / SRT	RTMP / RTSP / SRT	RTMP / RTSP / SRT	RTMP / RTSP / SRT
Auto Tracking	People Tracking (half or full body), Zone Tracking, Hybrid	People Tracking (half or full body), Zone Tracking, Hybrid	People Tracking (half or full body), Zone Tracking, Hybrid	People Tracking (half or full body), Zone Tracking, Hybrid	People Tracking (half or full body), Zone Tracking, Hybrid	People Tracking (half or full body), Zone Tracking, Hybrid
PoE+	Yes	Yes	Yes	Yes	Yes	Yes
USB 3.0, Type-C	Yes	Yes	Yes	Yes	No, USB 3.0, Type-B	No, USB 3.0, Type-B
TAA Compliant	No	No	No	No	Yes	Yes
WDR & Tally Light	Yes	Yes	Yes	Yes	Yes	Yes

TR311HN and TR3xxNV2 Cameras (continued)

TR313V2

12X Ultra HD PTZ live streaming camera

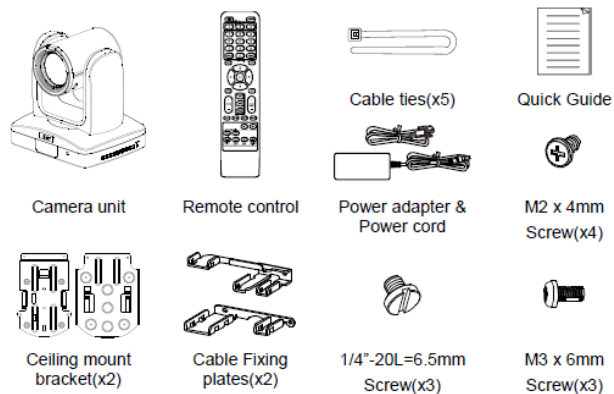
Featuring NEW AI Auto Tracking



***Note:** The TR3xxNV2 may not have an SDI output connection.

- AVer TR311HN and TR3xxNV2 Camera and accessories.

Package Contents



TR311HN and TR3xxNV2 Camera NDI Video Mode

Before proceeding, we need to verify that the TR311HN/TR3xxNV2 camera is setup for NDI, if not; there will be no NDI output.

***Note:** The TR311HN/TR3xxNV2 cameras come with NDI activated from the factory but could change with future production models.

There are (2) ways to do this:

- HDMI Output of the camera
- WebUI of the camera

HDMI

1. Connect the HDMI output of the camera to a monitor and use the camera remote to enable the OSD (On Screen display), then navigate to the System→NDI→ setting and verify it is set to ON.



2. If it is set to OFF, select ON, the camera will reboot.

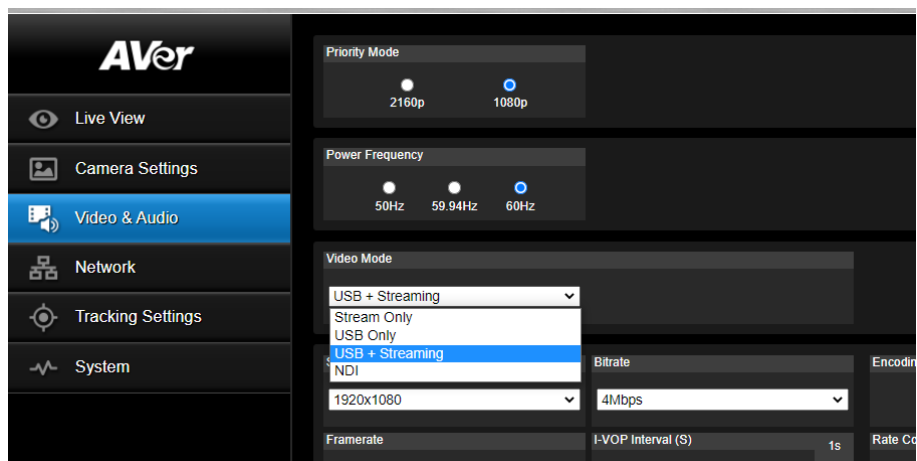
***Note:** When the camera is in NDI mode, the USB video output is disabled.

TR311HN and TR3xxNV2 Camera NDI Video Mode (continued)

WebUI

1. The **Default IP** address is 192.168.1.168. You can change this using the HDMI output OSD, selecting the Network setting.
2. Use a **Chrome Browser** to access the WebUI of the camera.
3. The **Default** Username/Password is: admin / admin
4. The login credentials will need to be changed, carefully write down the NEW credentials.
5. Login to the WebUI of the camera with the NEW credentials.
6. Once logged in, go to the “*Video & Audio*” settings, verify that “*Video Mode*” has “*NDI*” selected.

***Note:** The camera will need to re-boot when changing to/from NDI video mode.

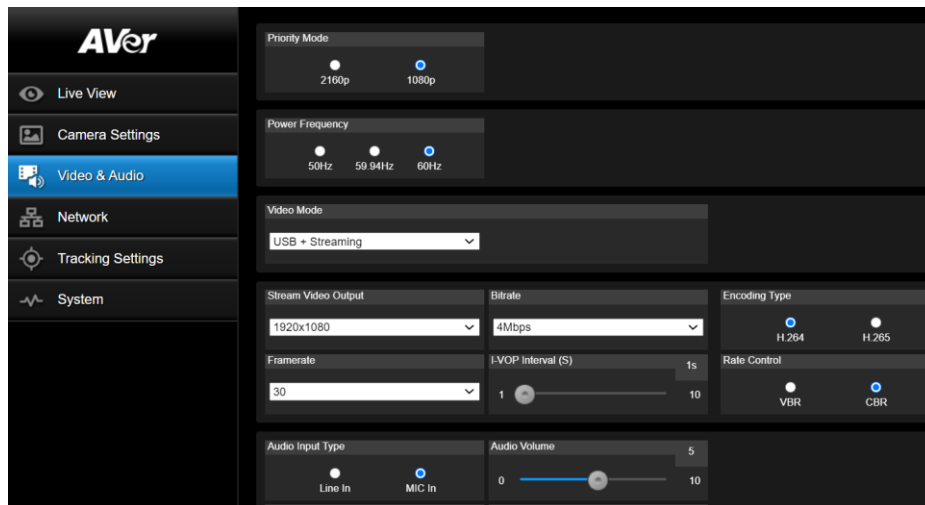


***Note:** The STREAM Video Output, Framerate, encoding type, and Sampling Rate settings are adjustable in NDI mode for the TR311HN/TR3xxNV2 camera.

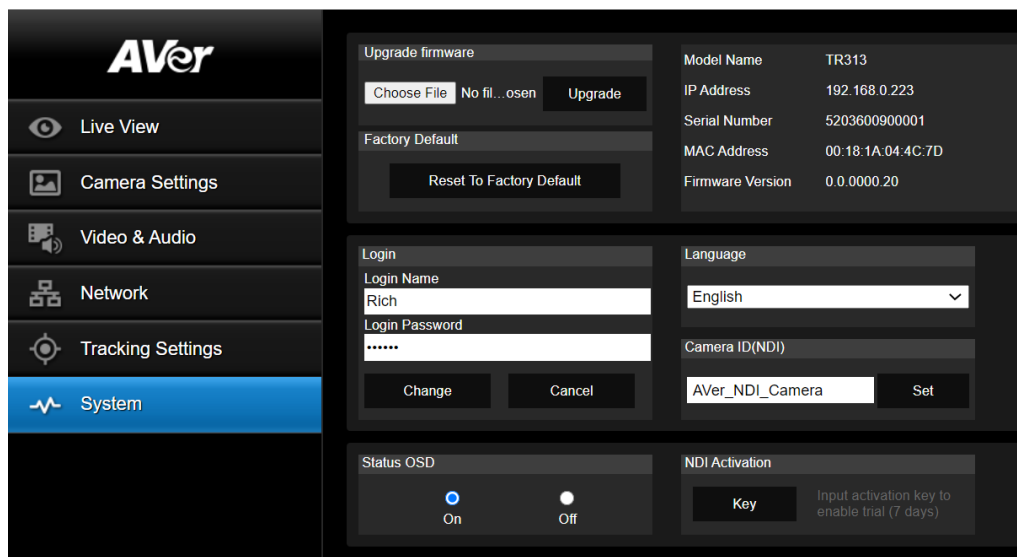
Video Standard -->	Stream Only (Various)	USB Only (Various)	USB + Streaming (Various)	NDI (1080p/60)
SDI Output	✓	✓	✓	✓
HDMI Output	✓	✓	✓	✓
USB Output	✗	✓	✓	✗
RTSP Output	✓	✗	✓	✓

TR311HN and TR3xxNV2 Camera NDI Video Mode (continued)

- The Rate Control setting should be set to CBR, there have been better results seen using this option.



- Setting the Bitrate to 8Mbps is also recommended, but you may see different results on your network with other settings.
- In the *System* page you can set the identity name *Camera ID (NDI)* for display on the NDI interface. After choosing your name press “Set” to make the change. ***Note:** A reboot of the camera is necessary for the name change. The firmware version can also be verified from the *System* page.



TR311HN and TR3xxNV2 Camera NDI Video Mode (continued)

10. The following characters can be used for the Camera ID description; there is a limit of 10 characters for the name.

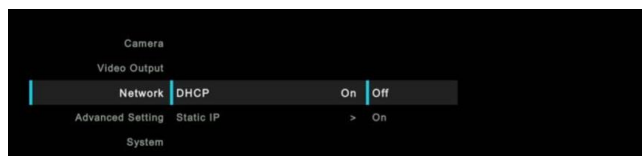
Numeric characters	0123456789
Alphabetical characters (upper and lower cases)	ABCDEFGHIJKLMNOPQRSTUVWXYZ abcdefghijklmnopqrstuvwxyz
Symbols	!@#\$%^&*(),. \ ; : ' ' + = < > ? [] { } - _ ` ~ \ /

WebUI

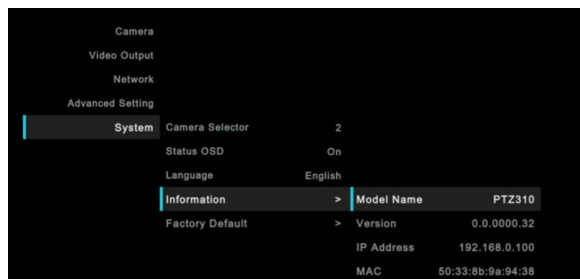
Networking:

1. Connect the TR311HN camera via RJ45 Network Cat5E (or better) connection, either directly or through a network switch. If the IP address is not known, locate the remote, select the “Menu” icon and navigate to the “**Network->DHCP->**” setting, verify DHCP is set to “On” to grab an available IP address. If you are reserving IP addresses, verify it is set to “OFF” and that the correct IP address has been set.

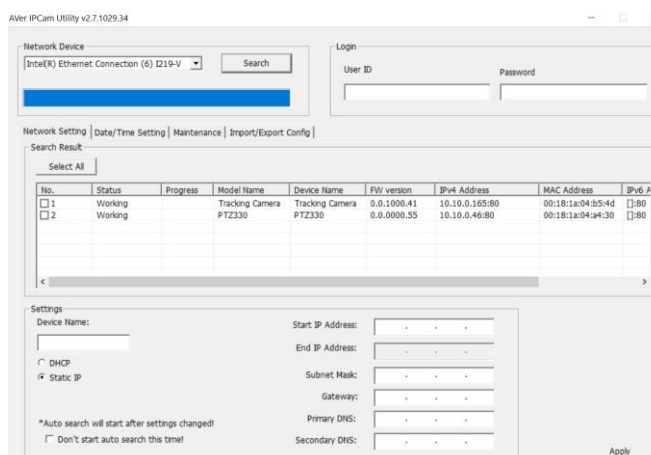
Go to **Network > DHCP > On**.



After turning DHCP on, go to **System > Information** to view the IP address.



2. You can also use the *AVer IPCam Utility* software to find the camera. It can be found here: <https://www.aver.com/download-center>. OR <https://www.averusa.com/pro-av/support/>



TR311HN and TR3xxNV2 Camera NDI Video Mode (continued)

WebUI

Networking:

3. Once you have the IP address setup, type the IP address in your Chrome browser (Setup on same subnet) and you should now see the login to the PTZ330 camera shown below.

Sign in
http://192.168.0.106
Your connection to this site is not private

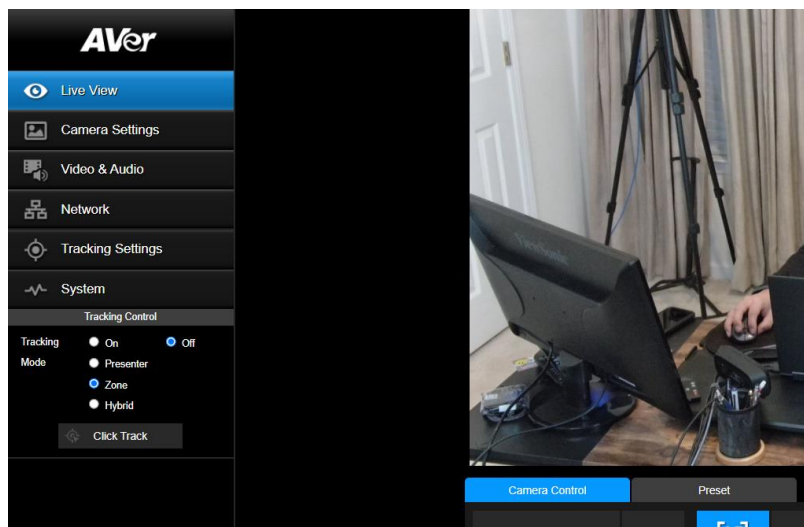
Username

Password

***Note:** The default login information is: admin / admin.

If this is the first time accessing the TR311HN camera via the Web login it will ask you to change the Username/Password. **Please write down the NEW credentials.**

4. Next, you should now see the main login screen with a “Live View” of the PTZ Camera.



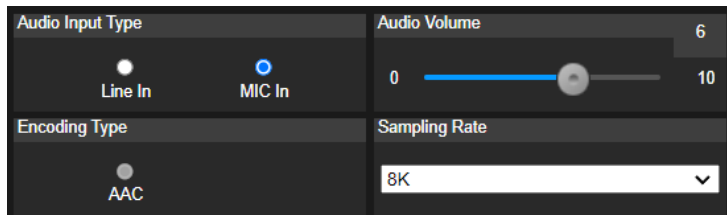
Next, after selecting the *Video & Audio* setting, verify that you have “NDI” selected for Video Mode. Select your Stream Video Output, Bitrate, Framerate, Encoding, etc.

***Note:** The camera will need to re-boot when changing to/from NDI video mode.

TR311HN and TR3xxNV2 Camera Audio Settings

Before connecting to the Google Meet/Hangouts environment, verify that the Audio and Video can be recorded using the NDI *Studio Monitor* Tool.

1. Using the TR camera Audio (In) connection, set the Audio Input Type to *Line-In*.



MIC-In: Use a 3 to 4 MIC-In cable to connect the camera and MIC-In device (microphone).
50mVrms (max.); supplied voltage: 2.5V

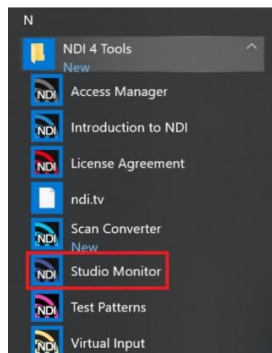
Line In: Line Input level is 1Vrms (max.)

2. Select the Audio Settings in the NDI Monitor tool to a level where audio is being captured; you may need to “tweak” the level to get a good level.
3. Next, we will discuss how to test that NDI audio/video is being received and recorded using *NDI Studio Monitor*.

NDI Studio Monitor

Using NDI Studio Monitor is a quick way to verify that the AVer PTZ camera is outputting NDI video and audio.

1. Go to Windows Start Menu, select NDI’s *Studio Monitor*.



2. Next, the NDI Studio Monitor window will open, it may display AVer video or may display NDI’s default video of “None”.

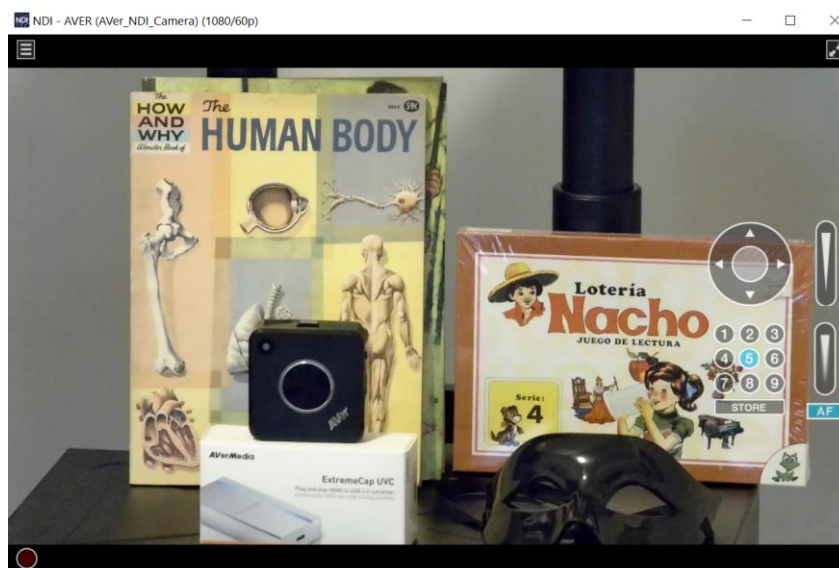


NDI Studio Monitor (continued)

3. Next, to view AVER video, select the Menu box displayed on upper left, then select “AVER_NDI_Camera”. You can also “right-click” anywhere within the window to access the menu.



4. Next, you should now be viewing the AVER TR311HN/TR3xxNV2 video as a source and it should also be displaying the Video Standard (1080/60p) from AVer Camera.

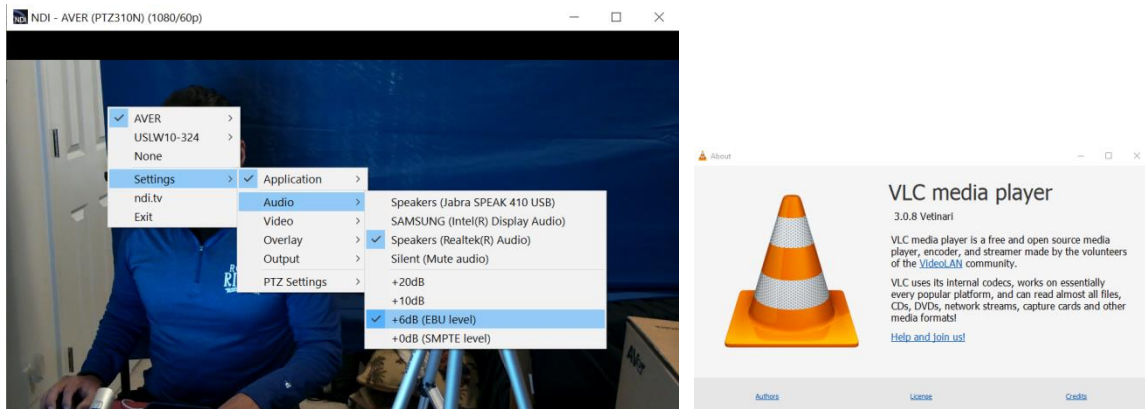


5. At this point, you can close the window and have verified NDI video from TR camera is working.

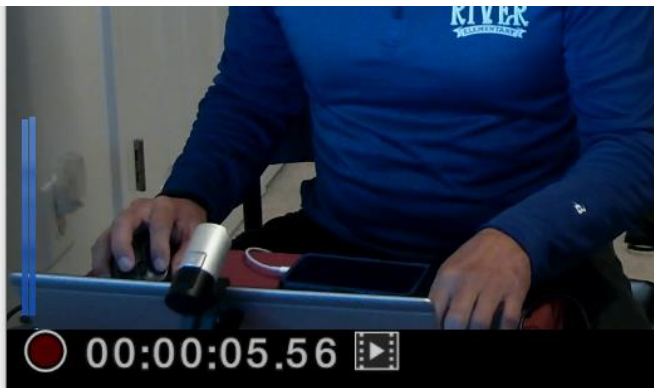
TR311HN and TR3xxNV2 Camera NDI Audio

Once we have verified that video is working properly, we need to verify that audio is also being captured.

1. In the example below we needed to adjust level to +6dB (EBU Level) to get audio recorded through the NDI Monitoring tool then played through VLC Media Player (3.0.8).




2. You should also see blue “Audio bars” in the lower left corner of the NDI display indicating an audio signal is being received.



3. Next, select the red “record” circle icon to begin recording.

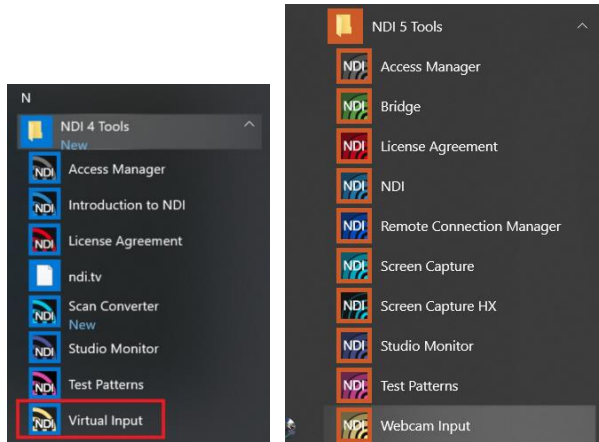


4. Next, select the red “record” circle icon again to end the recording.
5. Next, select the  “film” icon and will take you to the recording directly. The recorded video will be in the “C:\Users\Dave\Videos\” folder in Windows.
6. Use VLC or some other player that supports NDI.
7. This concludes the quick test to verify that Audio/Video is being recorded and played via NDI.

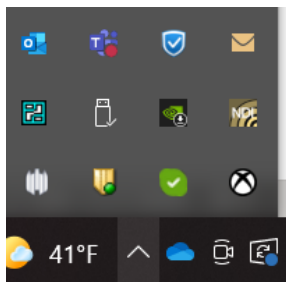
NDI Virtual Input / Webcam Input

Using the NDI Virtual Input, gives you the ability of supplying a high-quality video source to Panopto, (i.e., from TR311HN), here is how to configure a “Webcam Input” from NDI. This “Webcam Input” will be the video *Source* for Panopto.

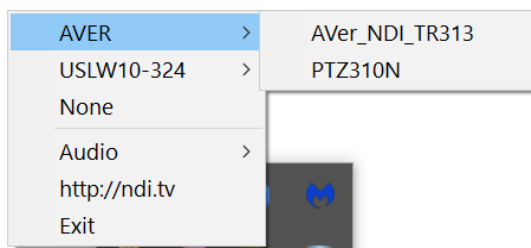
1. Go to Windows Start Menu, select NDI’s *Webcam Input* application.



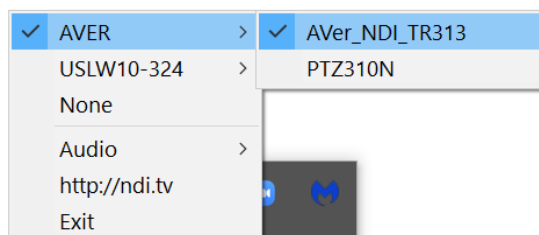
2. Next, it will open and place an icon on your System Tray.



3. Next, Right-Click on the NDI icon, you should have the ability to select AVER->TR311HN.



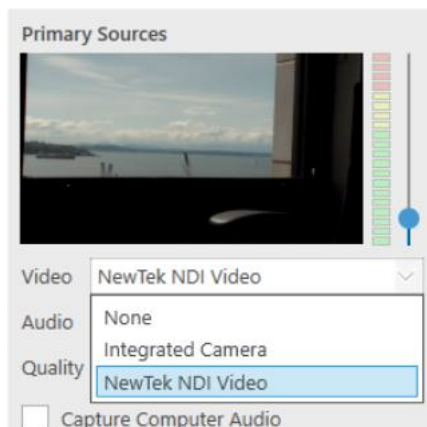
4. Next, verify that your selection is for AVER->TR311HN, Right-click on icon to verify check marks are there.



5. This concludes setting up the AVer PTZ camera as a *Webcam Input* for NDI integration.

Panopto for Windows System Video Input (NDI)

1. Go to the Panopto's desktop client; select the NDI source from the list.

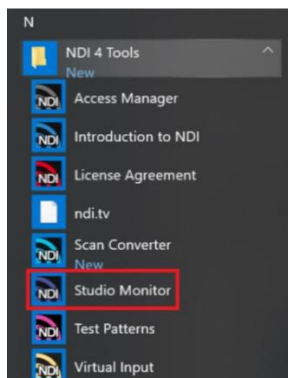


2. Next, you should be seeing the NDI video from the PTZ camera. If not, go to the NewTek NDI Studio Monitor to verify video from the camera.

NDI Studio Monitor

Using NDI Studio Monitor is a quick way to verify that the AVer PTZ camera is outputting NDI video.

1. Go to Windows Start Menu, select NDI's *Studio Monitor*.

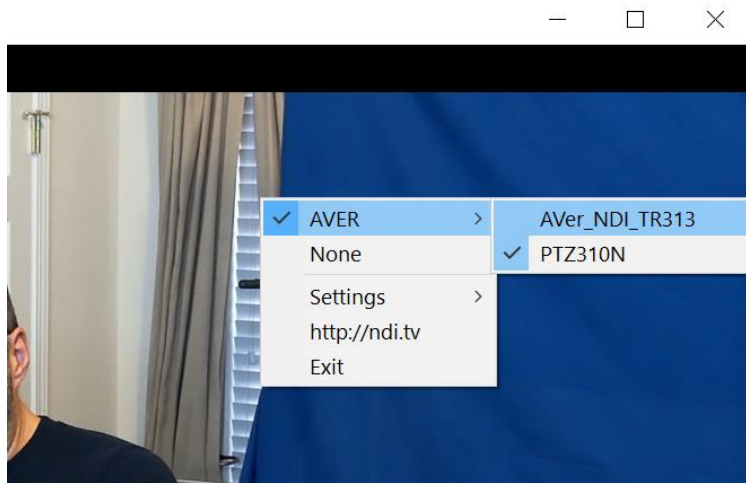


2. Next, the NDI Studio Monitor window will open, it may display AVer video or may display NDI's default video of "None".

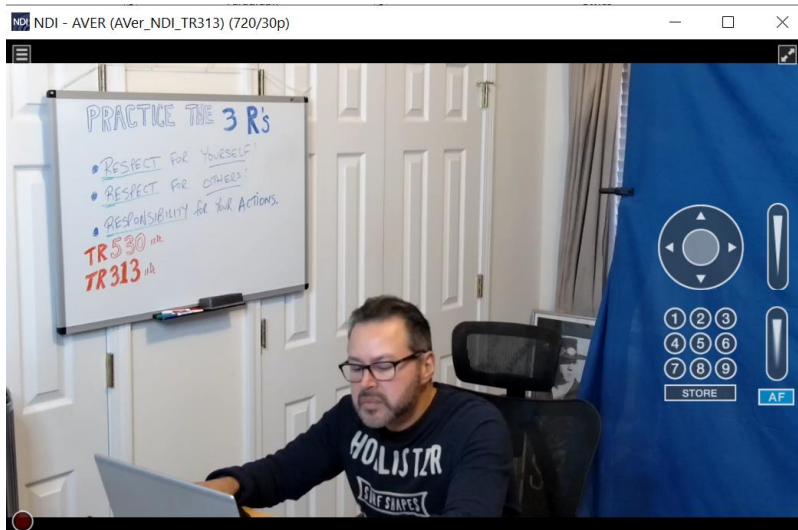


NDI Studio Monitor (continued)

- Next, to view AVER video, select the Menu box displayed on upper left, then select the name that was defined for the camera, "AVER_NDI_TR313". You can also "right-click" anywhere within the window to access the menu.



- Next, you should now be viewing the AVER TR311HN/TR3xxNV2 video as a source and displays the Video Standard (1080/60p) from AVer Camera. The Video Output and Framerate can be adjusted to your specification for NDI streaming.



- At this point, you can close the window and have verified NDI video from TR311/333 camera is working.

Check the AVer Pro-AV Website for additional support documentation.

<https://www.averusa.com/pro-av/support/>